

# East Suffolk Catchment Partnership

facilitated by

## Essex and Suffolk Rivers Trust



## Background to the East Suffolk Catchment Partnership

The East Suffolk Catchment Partnership is a new group building on the successful work and approach pioneered by the Rivers Trust movement across the UK. We hope it will become a wide partnership drawing together a group of engaged organisations and individuals far beyond the 'usual suspects' around the issues of; Urban development and its impacts on the catchment; water availability; diffuse pollution from rural and urban sources; physical modifications and all the Significant Water Management Issues currently identified by the EA and others for the Water Framework Directive<sup>1</sup>.

The East Suffolk Catchment Partnership has the potential to provide a source of inspiration to spread the catchment management agenda into the wider public arena through its members and demonstrations of good practice, thus helping embed WFD aims into plans and processes of business, organisations and statutory bodies. The Partnership might also seek to demonstrate and highlight, through its Partners, what good practice and Good Ecological Status looks like and aim to establish routes to skills and funding to assist wider adoption of the examples and good practice. It could also seek to assess the current classifications and data underpinning the River Basin Management Planning (RBMP)<sup>2</sup> process, whilst also identifying valuable additional sources of evidence and information.

In this way the Partnership could foster and support growth of local initiatives for delivery, these could be both projects and local action groups. It is likely that the Partnership will be continually looking for new members who are interested in how their actions impact on the river catchments.

### **Expressions of support for the East Suffolk Catchment Partnership idea were offered by;**

Anglian Water, Atlas Fram, Suffolk Coasts & Heaths AONB, Catchment Sensitive Farming, Environment Agency, Essex and Suffolk Water, National Farmers Union, Strutt & Parker, Suffolk Biodiversity Partnership, Suffolk Wildlife Trust and Waveney Rivers Trust.

We hope to use this diverse list as the starting point for building the Partnership.

## The Catchment Based Approach

In February 2011 Richard Benyon announced the government's belief that *"more locally focussed decision making and action should sit at the heart of the debate about the future direction of improvements to the water environment"*. Subsequently, in June 2013, following a series of 25 pilot projects trialling an integrated approach to managing the water environment in river catchments Defra launched a policy framework under the banner the **Catchment Based Approach (CaBA)**<sup>3,4</sup>.

Described as *"A policy framework to encourage the wider adoption of an integrated Catchment Based Approach to improving the quality of our water environment"* CaBA represents a significant opportunity for local influence and action to drive improvements in the health of our rivers and catchments. To support this work, and help develop catchment groups across all 84 river catchments in England, the

---

<sup>1</sup> [http://www.environment-agency.gov.uk/static/documents/Utility/East\\_Suffolk\\_Rivers\\_Catchment.pdf](http://www.environment-agency.gov.uk/static/documents/Utility/East_Suffolk_Rivers_Catchment.pdf)

<sup>2</sup> <http://www.environment-agency.gov.uk/research/planning/124725.aspx>

<sup>3</sup> <https://www.gov.uk/government/publications/catchment-based-approach-improving-the-quality-of-our-water-environment>

<sup>4</sup> <http://www.environment-agency.gov.uk/research/planning/131506.aspx>

# East Suffolk Catchment Partnership

facilitated by

## Essex and Suffolk Rivers Trust



Catchment Partnership Fund was launched. Part of what the Catchment Partnership may wish to do is add their own knowledge to this summary and form their own views on what best describes the various river catchments within the 'East Suffolk Rivers' umbrella. It is certainly the case that the Partnership will develop a plan of action to tackle the issues around water quality, water availability and the water environment and make the most of the opportunities available. Exactly what and how will be developed as part of the Partnership's work but it is likely that in due course new projects and support for existing initiatives will be generated through the Partnership.

The Rivers Trust and the Essex and Suffolk Rivers Trust bid successfully to the fund to co-host a catchment partnership for the East Suffolk management catchment.

## What is the East Suffolk catchment?

The East Suffolk Rivers catchment includes the valleys, tributaries and estuaries of the rivers Gipping, Deben, Alde, Thorpeness Hundred, Yox, Blyth and Lothingland Hundred.

Described by the EA in their current Challenges and Choices Consultation as *"mostly rural with significant urban areas ... Land is predominantly used for agriculture but pockets of industry also exist, including food processing, milling, malting and the manufacture of farm machinery and fertilisers"*<sup>5</sup>.

---

<sup>5</sup> [http://www.environment-agency.gov.uk/static/documents/Utility/East\\_Suffolk\\_Rivers\\_Catchment.pdf](http://www.environment-agency.gov.uk/static/documents/Utility/East_Suffolk_Rivers_Catchment.pdf)

# East Suffolk Catchment Partnership

facilitated by

## Essex and Suffolk Rivers Trust

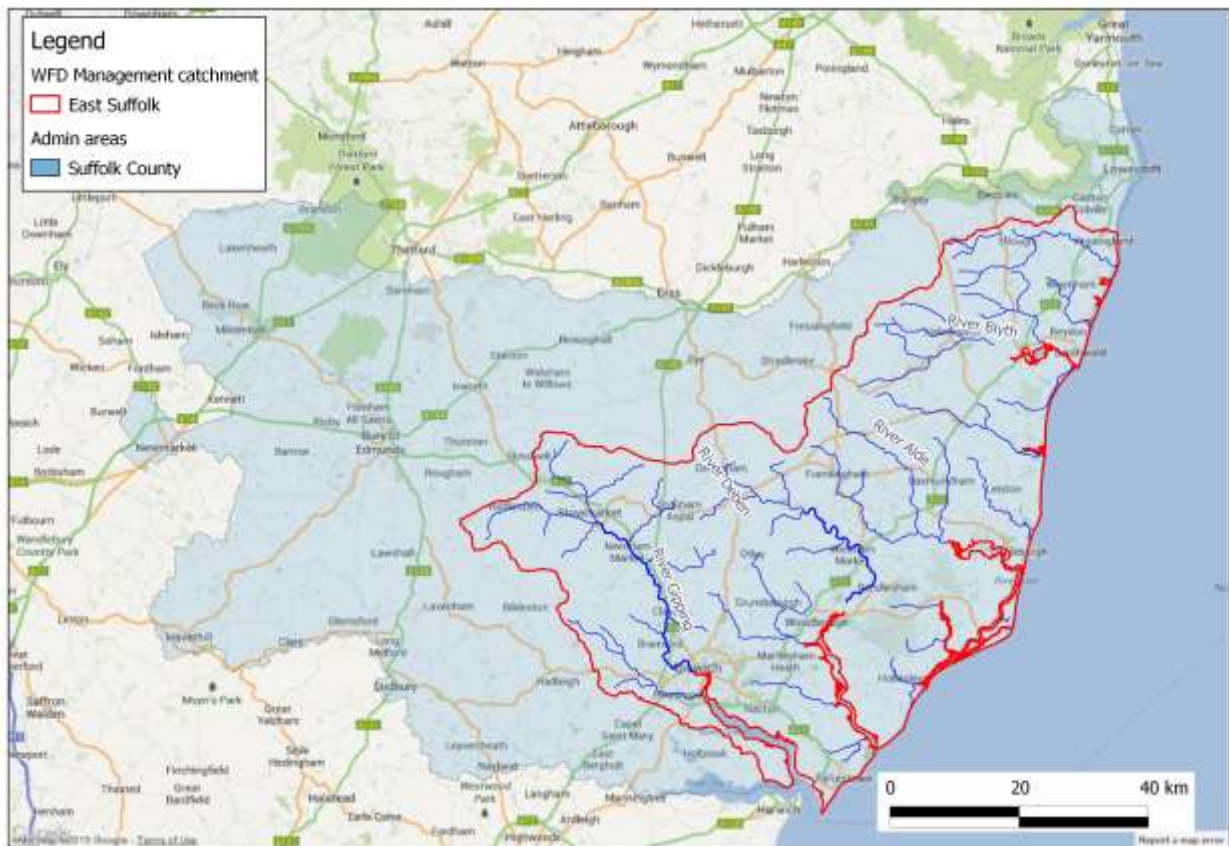


Figure 1 East Suffolk Rivers Catchment. Map information courtesy of Ordnance Survey Open Data, The Environment Agency & Google

Part of what the Catchment Partnership may wish to do is add their own knowledge to this summary and form their own views on what best describes the various river catchments within the 'East Suffolk Rivers' umbrella. It is certainly the case that the Partnership will develop a plan of action to tackle the issues around water quality, water availability and the water environment and make the most of the opportunities available. Exactly what and how will be developed as part of the Partnership's work but it is likely that in due course new projects and support for existing initiatives will be generated through the Partnership.

## The Rivers Trust

The Rivers Trust movement has been at the forefront of collaborate working for the last 15 years, driving developments in stakeholder engagement and securing value from ecosystem service provision at both local level (<http://www.therivertrust.org/projects/stakeholder/index.html>) and internationally (EU Water Project [http://www.therivertrust.org/projects/water/water\\_project.html](http://www.therivertrust.org/projects/water/water_project.html)). The Rivers Trust is a registered charity itself and proves expert guidance and support for regional trusts throughout England and Wales.

[www.therivertrust.org](http://www.therivertrust.org)

# East Suffolk Catchment Partnership

*facilitated by*

## Essex and Suffolk Rivers Trust



### Essex and Suffolk Rivers Trust

The Essex and Suffolk Rivers Trust is a newly forming charity comprising a diverse group of organisations and individuals around the challenge of catchment management. The Trust includes farmers, fishery interests, statutory agencies, water companies, private landowners, councils, environmental charities and river projects. In that sense, although newly established, the Trust is already doing the work the Catchment Partnership will be based on. The members of the Essex and Suffolk Rivers Trust themselves have experience in public engagement, facilitation, project planning and delivery, fundraising, regulation, business and recreation, all of which will be essential to establishing a self-sustaining Catchment Partnership.

[www.essexsuffolkriverstrust.org](http://www.essexsuffolkriverstrust.org)