



Vision and Strategy 2024-2030

www.essexsuffolkrivertrust.org

Who we are

Rivers and estuaries shape our landscapes and provide the foundations for our cities, towns and countryside. When they thrive, so do we.

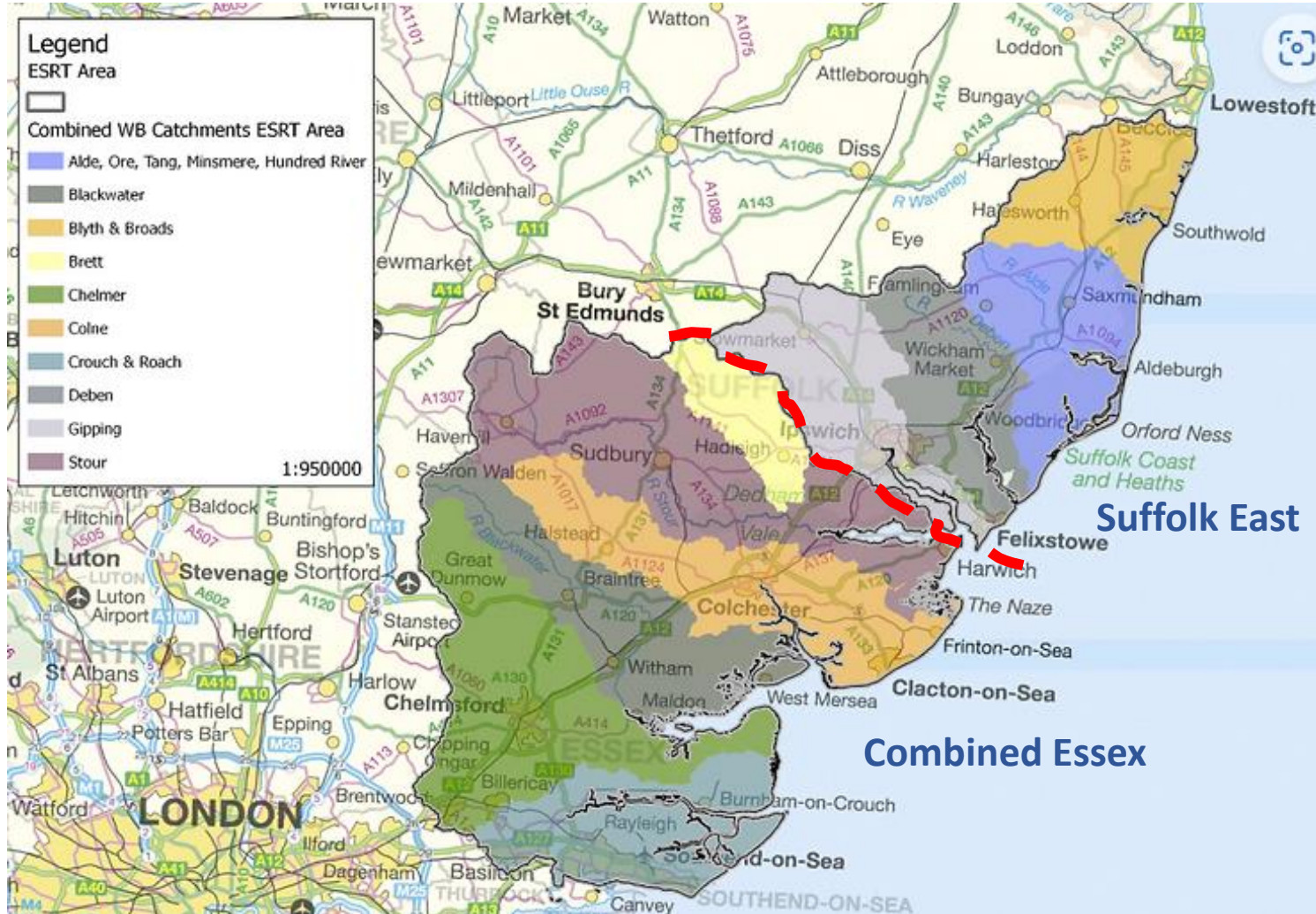
In 2014, Essex and Suffolk Rivers Trust was established as a Registered Charity (No. 1157392) and Company Limited by Guarantee (No. 08834787).

Our work is to protect and restore our rivers and estuaries, now and for future generations, and to advance understanding of the need to conserve and care for them.

We work with farmers, residents and organisations offering advice and resources that support their communities. We bring together people, knowledge, data and expertise to take action to help our rivers thrive once more.

We are proud members of The Rivers Trust, the umbrella organisation working across the UK and Ireland to lead a movement for change in our rivers.

Where we work



We work in the rivers and estuaries that make up the Management Catchments: East Suffolk and Combined Essex (see [Catchment Data Explorer](#)): Over 1200km of river.

We host the Essex Rivers Hub and the East Suffolk Catchment Partnerships bringing over 40 organisations together to deliver change for our rivers and estuaries

Our catchments or watersheds cover nearly 4500km² of countryside.

What we do

Only 10% of river stretches in the rivers and estuaries we work in are reported to be at good ecological status. This is the result of historic changes to the river, pollution and climate change. Our region is one of the driest and hottest parts of the country with rainfall by 2040 predicted by the Met Office to be significantly below the national average. We are increasingly affected by flooding from extreme rainfall events. Many of our key species are threatened through habitat loss and climate change.

Yet we have some of the most iconic rivers and internationally important estuaries in the UK. Most importantly, the people who live and work near them care about their future.

Our vision is for the rivers and estuaries of Essex and Suffolk to be rich in wildlife, loved and cared for by local people, and protected for future generations.

How we will achieve our vision

Our strategy to 2030 is to work with partners and communities in four areas to:

Restore natural processes and habitats	Protect our land and water	Inspire people to get involved	Build resilience for future generations
<p><i>We will:</i></p> <p>Work with partners to remove barriers from our rivers.</p>	<p><i>We will:</i></p> <p>Promote healthy soil and water management with farm clusters, landowners and local authorities</p>	<p><i>We will:</i></p> <p>Provide inclusive opportunities to volunteer with us</p>	<p><i>We will:</i></p> <p>Build resources for the future</p>
<p>Restore the natural morphology in our rivers and estuaries.</p>	<p>Engage with communities to advance knowledge and understanding of the water environment</p>	<p>Engage with children and young people</p>	<p>Strive for sustainability in all we do</p>
<p>Plan river restoration at a catchment scale.</p>	<p>Manage habitats with partners to protect our wildlife and environment</p>	<p>Celebrate our cultural and natural heritage</p>	<p>Strengthen catchment partnerships</p>

Restore natural processes and habitats

We will:

- Work with partners to remove barriers from our rivers
- Restore the natural morphology in our rivers and estuaries
- Plan river restoration at a catchment scale

What success by 2030 looks like:

- Fish passage improved across Essex and Suffolk.
- Rolling 5-year project programme running.
- Long-term catchment scale project planning established.

Protect our land and water

We will:

- Promote healthy soil and water management with farm clusters, local authorities and industry
- Engage with communities to advance knowledge and understanding of the water environment
- Manage habitats with partners to protect our wildlife and the environment.

What success by 2030 looks like:

- Citizen science programme(s) established.
- Increased awareness of the value of water.
- Habitats restored and protected.

Inspire people to get involved

We will:

- Provide inclusive opportunities to volunteer with us
- Engage with children and young people
- Celebrate our cultural and natural heritage

What success by 2030 looks like:

- An established year-round volunteer offer with a wide range of roles; inclusive to all.
- Effective creative partnerships and projects in place engaging people with our water heritage.
- Access to blues paces increased with interpretation embedded in all projects.

Build resilience for future generations

We will:

- Build resources for the future
- Strive for sustainability in all we do
- Strengthen catchment partnerships

What success by 2030 looks like:

- We are a trusted and well-known voice.
- Our resources to deliver our vision are growing.
- We are inclusive and open organisation.

Annex 1 Key Performance Indicators by 2030

Restore natural processes and habitats	Protect our land and water
12 barriers to fish eased	480ha of river catchment area in planned recovery (80ha p.a)
60km of river restored	Any polluting point source discharges are identified for action
20ha of wetland and riparian zone habitat restored or created	25 Citizen Science groups established and/or supported
Inspire people to get involved	Build resilience for future generations
6 creative projects delivered	5000 unique visitors to our website per year by 2030
500 volunteers have worked with us to deliver our strategy	Achieve a total income of £2million from 2024-2030
20 education and youth groups worked with.	Staff car mileage fully offset

Annex 2 Charitable objects

- 1) To conserve, protect, rehabilitate and improve the rivers, streams, watercourses, groundwaters and water impoundments of the catchments comprising the rivers in Essex and Suffolk, including adjacent estuarine and coastal areas for the advancement of environmental protection or improvement for the benefit of the public.
- 2) To advance the education of the public or any association, institution, voluntary organisation, company, local authority, administrative or governmental agency or public body or representative body in:
 - a) The understanding of rivers, river corridors and river catchment including their fauna, flora, biodiversity, economic or social activity and river catchment management.
 - b) The need for and benefits of, conservation, protection, rehabilitation and improvement of aquatic environments.

Annex 3 Values and behaviours

Our values in Green with guiding principles below. Bulleted list are the principles translated into behaviours.

Inspire people	Think long term	Build good relationships	Make a difference
Inspire others to share our passion and get behind our Vision.	Behave in a sustainable way, reducing our impact on the environment and spending wisely.	Build relationships based on trust and effective communication.	Complete our work to a deliver benefits.
<ul style="list-style-type: none"> • Being an advocate for our Trust. • Be warm and welcoming when dealing with those we work with. • Champion change and innovation. • Encourage others to express their views and needs • Involve people in what we do. • Work with energy and at pace. 	<ul style="list-style-type: none"> • Focus on our priorities. • Think about the bigger picture. • Seek best value for money. • Look for ways to be more efficient. • Have the confidence to speak up when things have gone wrong. • Be imaginative about finding better ways of doing things. 	<ul style="list-style-type: none"> • Be open and constructive. • Be willing to share knowledge. • Establish who you need to work with to be most effective. • Empathise with others and the pressures facing them. • Manage expectations and keep promises. 	<ul style="list-style-type: none"> • Meet and exceed our objectives • Satisfy our funders and maintain our reputation • Show strong leadership • Be innovative in finding effective solutions • Tackle problems or concerns as they arise working with others to help solve.